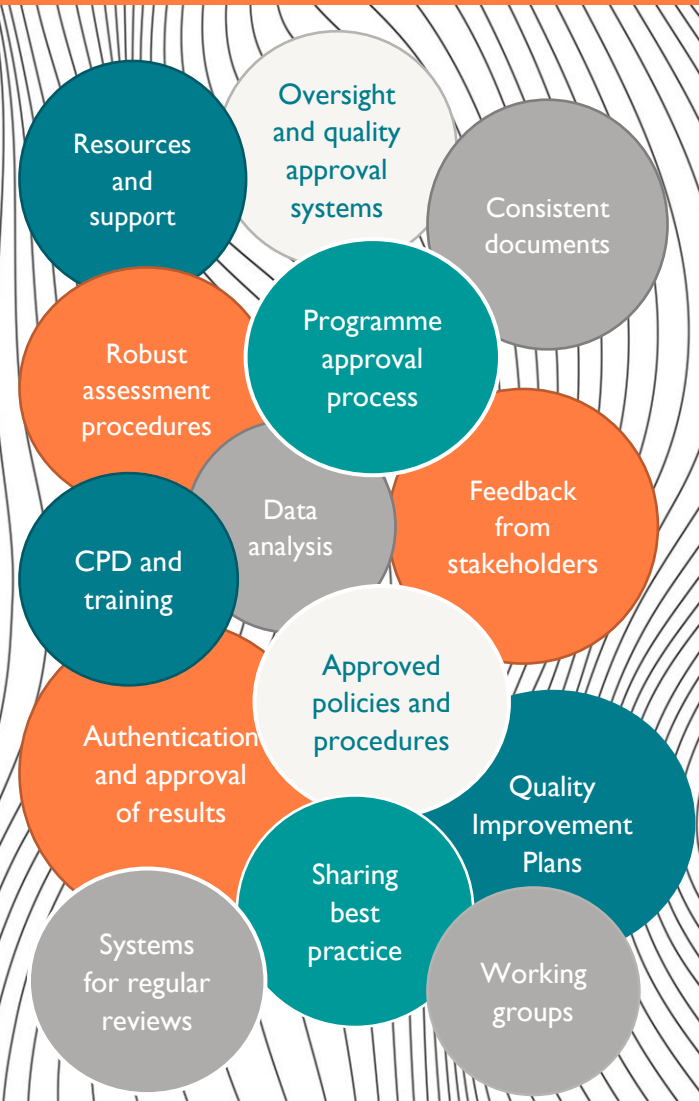


.....

## What is a 'quality culture'?

For KCETB, embedding a quality culture in the organisation is very important. It is part of a commitment to continuous improvement, reflection and review. This will improve the learning experience for all our learners. Features of the KCETB quality culture are:



.....

## Further information

If you would like to learn more about the KCETB self-evaluation process and the inaugural review event, please contact us. We would love to hear from you!

Up to date information will be published regularly on our website:

[www.kcetbqa.ie](http://www.kcetbqa.ie)

.....

## Contact

Quality Assurance Office  
Adult Education, Kilkenny and Carlow ETB  
Bishop Birch Training Institute, Nuncio Rd,  
Kilkenny  
056 781 3098  
[qa.info@kilkennycarlowetb.ie](mailto:qa.info@kilkennycarlowetb.ie)

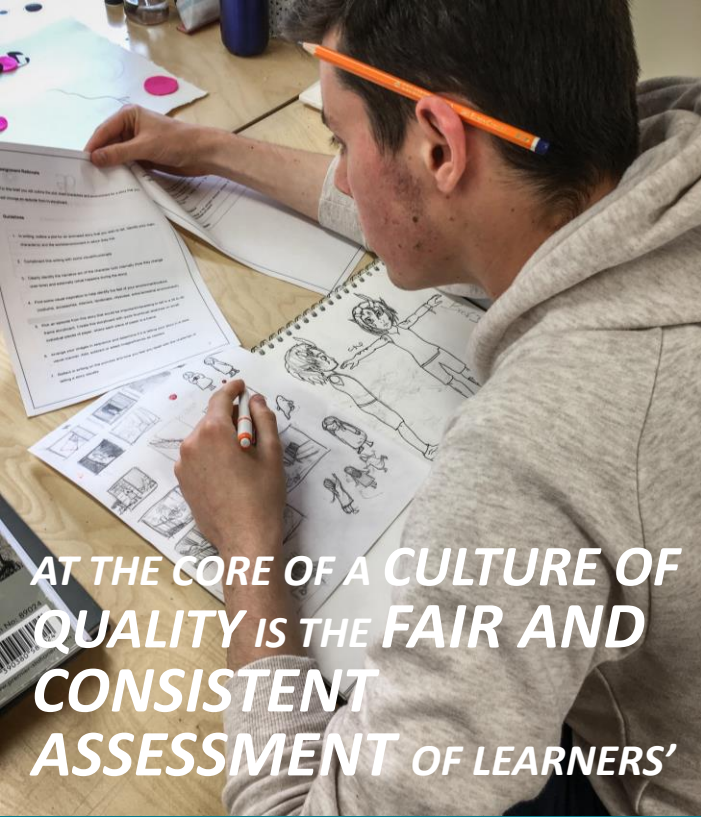


# QQI

# INAUGURAL REVIEW

.....

A KCETB INFORMATION LEAFLET



**AT THE CORE OF A CULTURE OF QUALITY IS THE FAIR AND CONSISTENT ASSESSMENT OF LEARNERS'**



## WHAT IS THE PURPOSE OF THE INAUGURAL REVIEW?

The core objective of the external review is to evaluate the implementation and effectiveness of KCETB's quality assurance procedures.

There are three objectives that are central to the inaugural review:

Objective 1: Governance and Management of Quality

Objective 2: Teaching, Learning and Assessment

Objective 3: Self-Evaluation, Monitoring & Review

More information on the Inaugural review



## KEY FINDINGS OF THE SELF-EVALUATION REPORT:

The KCETB Self-evaluation Report is published on the

[KCETB QA website](#). Key findings include the

evaluation outcomes for each of the core objectives.

A comprehensive action plan was devised as part of

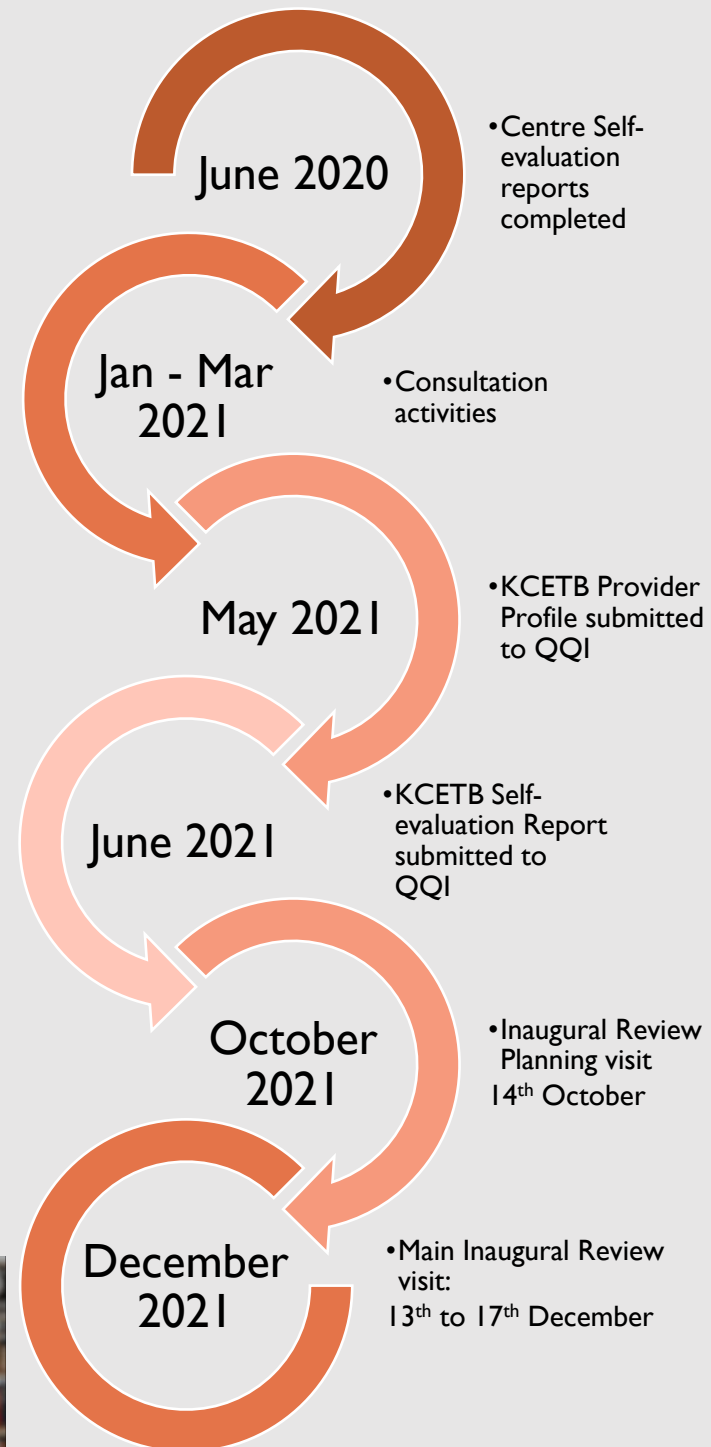
the recommendations from the report. This focuses

on 12 key quality areas.

For more information, check out the KCETB video:



## INAUGURAL REVIEW TIMELINE



## Consultation phase: 2020 - 2021

